



NAPA VALLEY
WINE TRAIN®

PRESS KIT
2016



WELCOME TO THE NAPA VALLEY WINE TRAIN



The Napa Valley Wine Train is one of the most distinctive Napa restaurants, offering an authentic, memorable experience that echoes the glory days of train travel, with fine dining service, multiple course gourmet meals, Napa Valley scenery, and ultimate relaxation aboard exquisitely maintained vintage railcars.

This top dining establishment is housed in a museum quality, antique train that runs on 25-miles of track in the heart of the Napa Valley. The train itself has two engines, three kitchens on board and a collection of early 20th century Pullman railcars faithfully restored with Honduran mahogany paneling, brass accents, etched glass partitions, and plush armchairs that evoke the spirit of luxury rail travel in the early 1900s. Take a trip into the luxurious American past and experience an unparalleled memory-making journey.





DINING JOURNEYS

Relax as you enjoy a freshly prepared, multiple course gourmet meal and watch Napa Valley scenery leisurely pass by from your seat in our beautifully appointed railcars. Our antique Train has three on board kitchens, serving each of their unique menu items fresh and cooked to order. There are many outstanding Napa Valley restaurants, but you will never forget your journey on the Napa Valley Wine Train. Winery Tours are also available.

LUNCH SCHEDULE

10:30 am Check in 11:30 am Train Departs
10:50 am Boarding 2:30 pm Train Returns

DINNER SCHEDULE

5:30 pm Check in 6:30 pm Train Departs
5:50 pm Boarding 9:30 pm Train Returns

VISTA DOME

Private Seating

STARTING AT \$216 PER PERSON

Dine in elevated splendor. Our 1952 Pullman full domed railcar provides our most private dining experience. Access to the dining area of the two-story Vista Dome Car is limited exclusively to the guests with reserved seating. The Vista Dome is an intimate setting, making it one of our most popular dining experiences.

GOURMET EXPRESS

Lunch: Traditional Rail Seating
Dinner: Private Seating

STARTING AT \$141 PER PERSON

Travel back to an elegant age. Our Gourmet Express Package has been designed to recreate the romance and luxury of early train travel by providing both dining and lounge service. These expertly refurbished 1915-1917 Pullman cars create an atmosphere ideal for relaxation or celebration.

SILVERADO

Traditional Rail Seating
Open May - October
Lunch Only

STARTING AT \$141 PER PERSON

Decorated in a rustic style reminiscent of a Hollywood Western, the Silverado Car still boasts our renowned gourmet and luxurious touches. Many of the pieces actually came from the DeDomenico Family ranch, adding authenticity to its playful ambiance. The open windows allow the sounds and smells of the Valley to permeate your experience, all while you enjoy Napa cuisine prepared in the Silverado Car's own kitchen.

MURDER MYSTERY

Traditional Rail Seating
Select Dinner Trains

STARTING AT \$192 PER PERSON

Add some drama to dinner with a Murder Mystery Dinner on board the Wine Train. Come prepared to mix and mingle, dress the part, or just get down to business and solve the murder. A perfect outing for groups, birthdays, bachelorette parties, and friends.

ROMANCE ON THE RAILS

Private Seating
Offered Monthly on Dinner Trains

STARTING AT \$246 PER PERSON

Escape the pressures of everyday life in the romantic evening vineyards of Napa Valley. Enjoy dinner in a private booth in the Wine Train's 1952 glass topped Vista Dome with stars twinkling above.

Food prepared fresh on board; Cocktail attire suggested; Welcome taste of wine included.

During the months of July - October a \$20 per person increase will be applied on all packages Friday, Saturday, and Sunday. Gratuity not included; Prices and schedule subject to change.





WINERY TOURS

The Napa Valley Wine Train's Winery Tours provide a complete Napa Valley experience. Fill your day with a multiple course gourmet meal on the Wine Train and an exclusive tour and wine tasting at one or more of our many outstanding partner wineries. Relax as we transport you to and from the wineries and through the Valley with seamless transfers. Our fine dining service, Winery Tours, and beautiful scenery is a sample of everything Napa Valley has to offer. In the spirit of traditional rail seating, you will share a table with another party.

CASTLE WINERY TOUR CASTELLO DI AMOROSA Lunch



STARTING AT \$261 10:50AM-4:15PM

Step back in time 100 years when you board the Train, and travel back another 500 years when you reach Castello di Amorosa. After an hour and a half on the Wine Train, journey north to Calistoga via motorcoach. Rising above the hills in the Napa Valley is Castello di Amorosa, which translates to the "castle of love" in Italian. Castello di Amorosa is an authentically styled, 13th century Tuscan castle winery replete with high walls and five defensive towers and more than 30 acres of estate vineyards. It was built during a 15 year period by Dario Sattui, a fourth generation winemaker and owner of V. Sattui Winery in St. Helena, California. Return to Napa via motorcoach along Silverado Trail.

Board: 10:50 am Depart: 11:30 am Transfer via motorcoach: 1:10 pm

Arrive at the Castle: 1:20 pm Depart via motorcoach: 3:30 pm Arrive at the Napa Station: 4:15 pm

AMBASSADOR WINERY TOUR CHARLES KRUG AND RAYMOND VINEYARDS Lunch



STARTING AT \$261 10:50AM-4:15PM

If you are looking to make the most of your time in Napa Valley, the Ambassador Winery Tour is the perfect option. Take in the views of the western side of the Valley as you indulge in your freshly prepared onboard lunch in either our Gourmet Express Package or Vista Dome. After an hour and a half on the Train, transfer to a luxury motorcoach and travel to both Charles Krug Winery and Raymond Vineyards. Charles Krug was the first winery in Napa Valley and Raymond Vineyards is known for their elegant and whimsical way of expressing the art of winemaking. After your tours, return to the Wine Train Station via the Silverado Trail while viewing the east side of the Valley.

Board: 10:50 am Depart: 11:30 am Transfer via Motorcoach: 1:10 pm

Arrive at Charles Krug: 1:15 pm Depart via motorcoach: 2:20 pm Arrive at Raymond Vineyards: 2:30 pm

Depart via motorcoach: 3:45 pm Arrive at the Napa Station: 4:15 pm



GRGICH HILLS WINERY TOUR GRGICH HILLS ESTATE Lunch



STARTING AT \$201 10:50AM-2:30PM

The Grgich Hills Winery Tour is our only Tour where you are transported solely by the Napa Valley Wine Train. Following your choice of soup or salad and entree in a dining car, the Wine Train will stop in front of Grgich Hills for you to step off and begin your tour. On its southbound journey, the Train will stop again for you to re-board and settle into one of our 1915 Pullman lounge cars where you will enjoy your chosen dessert and coffee as you return to the Wine Train Station.

Board: 10:50 am Depart: 11:30 am

Arrive at Grgich Hills: 12:30 pm Depart via Wine Train: 1:30 pm Arrive at the Napa Station: 2:30 pm

RAYMOND WINERY TOUR RAYMOND VINEYARDS Lunch



STARTING AT \$201 10:30AM-2:30PM

View the vineyards and rolling hills of Napa Valley's less developed east side as you travel up the Silverado Trail by motorcoach before the Train even leaves the Station. Arrive at Raymond Vineyards and explore their Theater of Nature, facilities, and eclectic style on your guided tour, while sampling some of their exquisite wines. Transfer to the Train after your tour and relax for the next two hours viewing the west side of the Valley and savoring a multiple course gourmet lunch in one of our dining cars as you return to Napa.

Board Motorcoach: 10:30 am Depart via Motorcoach: 10:40 am Arrive at Raymond Vineyards: 11:10 am

Depart Raymond Vineyards: 12:40 pm Board Wine Train: 1:00 pm Arrive at the Napa Station: 2:30 pm

EVENING WINERY TOUR GRGICH HILLS ESTATE Dinner



STARTING AT \$216 SATURDAYS 5:40PM-9:30PM

The Napa Valley experience continues after the tasting rooms close. The Evening Winery Tour is a VIP-style tour of Grgich Hills Estate after it has already closed for the day. Grgich Hills opens exclusively for the Wine Train's Evening Winery Tour guests. The tour will include a behind-the-scenes look at the cellar, fruit and cheese pairings, and a taste of the different Grgich Hills Wines. After the tour, the Napa Valley Wine Train will stop in front of the winery for you to board. You will be escorted into the dining car for your multiple course gourmet dinner.

Board Motorcoach: 5:40 pm Depart via Motorcoach: 5:45 pm

Arrive at Grgich Hills: 6:15 pm Board Wine Train: 7:30 pm Arrive at the Napa Station: 9:30 pm



SPECIAL EVENTS

Celebrate holidays in a most memorable setting and experience one-of-a-kind events throughout the year. The Wine Train's Special Events are an opportunity to add vintage charm to your next occasion.

VISTA DOME PREMIER

SELECT WEEKDAYS, JANUARY AND FEBRUARY

\$216 PER PERSON

The Vista Dome Premier is a seasonal train which features the same menu and elevated dining of the traditional Vista Dome experience, but with the added privacy of a smaller consist and limited to 56 passengers. Available on select weekdays in January and February. See the beauty of Napa Valley's winter from your own semi-private train.

THE BIG GAME TRAIN

FEBRUARY 3, 2016

\$189-\$249 PER PERSON

"The Big Game Train," a once-in-a-lifetime experience on board the Napa Valley Wine Train, will feature former Philadelphia Eagles, St. Louis Rams and Kansas City Chiefs coach Dick Vermeil, as well as NFL vintners Damon Huard, Rick Mirer and Terry Hoage. This rare opportunity is a chance to taste award-winning wines crafted by NFL greats, enjoy a fabulous four-course lunch, meet sports legends and collect autographs.

VALENTINE'S DAY

FEBRUARY 14, 2016

STARTING AT \$139 PER PERSON

Napa Valley is one of the most romantic places in the world and an unforgettable, classic experience on board the Napa Valley Wine Train is the perfect gift to share with your sweetheart on Valentine's Day.

EASTER

MARCH 27, 2016

STARTING AT \$129 PER PERSON

Collect memories this Easter instead of eggs as you enjoy Chef Kelly Macdonald's exquisite lunch menu choices. Make the occasion even more special by celebrating on board our vintage train.

MOTHER'S DAY

MAY 8, 2016

STARTING AT \$129 PER PERSON

Pamper your mother with the luxury she deserves with the Wine Train's signature hospitality, quality, and opulence. Journey through the fresh vineyards while relaxing in loving company, with a rose for mom to make her day complete.

FATHER'S DAY

JUNE 19, 2016

STARTING AT \$141 PER PERSON

Celebrate Father's Day on board the Napa Valley Wine Train. Thrill his inner rail fan with our antique Pullman heavyweight railcars and Canadian diesel ALCO locomotives. The menu on board has a BBQ flair with an expanded local beer menu, exclusive for the special day. Each father also receives a commemorative pint glass.



INDEPENDENCE DAY

JULY 4, 2016

STARTING AT \$176 PER PERSON

Watch your family's eyes light up as they view the Yountville fireworks from the comfort of the Wine Train. Enjoy the Valley and a gourmet meal on board before the show. No driving, no parking, and no fighting traffic on the way home.

THANKSGIVING

NOVEMBER 24, 2016

STARTING AT \$166 PER PERSON

Pass through the Valley bathed in the changing colors of the season while spending quality time with your loved ones. Enjoy a traditional Thanksgiving meal (or one of our signature dishes) prepared fresh on board by our world-class Executive Chef Kelly Macdonald.

SANTA TRAINS

SELECT WEEKDAYS IN DECEMBER

\$25-\$45 PER PERSON

Celebrate the holiday spirit with Santa and his friends as you journey from Napa to Yountville and back. The winter vineyards and our vintage train will be the backdrop for a most memorable holiday experience.

NEW YEAR'S EVE

DECEMBER 31, 2016

\$75-\$340 PER PERSON

Celebrate the New Year in style and class. Roll through the vineyards while enjoying a gourmet dinner, taking extra time to soak in the allure of the evening. From the caviar and the sparkling wine, to the cuisine and DJ, everything is planned and executed to perfection.





HISTORY OF THE NAPA VALLEY WINE TRAIN

HISTORY OF THE RAILROAD AND WINE TRAIN

The Napa Valley Wine Train's history is almost as old as the state of California's. The rail line upon which the train travels was built in 1864 by San Francisco's first millionaire, Samuel Brannan, to transport visitors to his spa resort of Calistoga. The rail line changed hands, ending up being owned by Southern Pacific in 1885. During the late part of the 19th century and the early part of the 20th century, the railroad played a vital role in the economic and agricultural development of the Napa Valley, and provided regular passenger service to the communities of the Valley.

With the birth of the automobile, however, the train began to lose much of its former importance. Passenger service on the line was discontinued in the 1930s. In 1960, the right of way between St. Helena and Calistoga was abandoned, reverting to vineyards. The remaining portion was put up for sale in 1984.

Certain Napa Valley residents understood the importance of the rail line and did not want to lose it from Napa's landscape. A group, known as the Napa Valley Wine Train Inc., wanted to create a railroad that would preserve the transportation corridor for future use and reduce traffic congestion in the Valley.

Immediately, the Napa Valley Wine Train Inc. went on a hunt to find investors. Their search led them to San Francisco resident, Vincent DeDomenico, inventor of Rice-A-Roni and former owner of Ghirardelli Chocolate and Golden Grain Pasta. DeDomenico loved the concept of the Wine Train and offered to buy the whole operation. The Napa Valley Wine Train Inc. sold him the majority of the shares in the company and appointed him as the Wine Train's President and CEO.

With DeDomenico involved, the Napa Valley Wine Train was finally able to buy the line from Southern Pacific and begin the transformation into the company that it is today. On September 16, 1989, the Napa Valley Wine Train took its inaugural passenger trip and has been steadily running through the Valley ever since.



VINCENT DeDOMENICO



ALL ABOARD!
Napa Valley
WINE TRAIN
TOUR 36 MILES OF SCENIC WINE COUNTRY
VISIT WORLD FAMOUS WINERIES
Wine Tasting
AVOID THE RISKS OF THE ROAD
RIDE THE IRON HORSE
Authentic Pullman Lounge Cars
ENJOY GOURMET CUISINE
On Luxurious Dining Cars
FOR FURTHER INFORMATION CALL
(707) 253-2111
OR TOLL FREE (800) 522-4142 IN CALIFORNIA ONLY
MAPS 2111 • 2011 TRAIN 125 MCKINSTRY ST. NAPA, CA 94959



CAR HISTORY

The majority of the cars on the Napa Valley Wine Train's consist were built in 1915 by the Pullman Standard Company as first class coaches for the Northern Pacific Railway for use on their premiere trains: the North Coast Limited and the Northern Pacific Atlantic Express.

They were the height of technological advancement of their time and were built entirely out of steel. An all steel car provided significant improvements in safety to rail travelers. Other amenities of the newly built cars included electric lights, steam heat, and arched windows. The steel cars, also known as heavyweights, were significantly heavier than their wood predecessors each weighing about 141,000 pounds or 70.5 tons and were around 83 feet long.

In 1960, the Denver Rio Grande Western Railroad bought several of these Northern Pacific cars for its Ski Train service from Denver to Winter Park. They remained in service on the Denver Ski Train until they were purchased by The Napa Valley Wine Train in 1987. After acquiring them, the Wine Train began an extensive restoration project to restore and re-imagine the cars. The cars were furnished with Honduran mahogany paneling, brass accents, etched glass partitions, and velveteen fabric armchairs. Great effort was exerted to ensure that the interior of the railcars evoked the spirit of opulent rail travel at the beginning of the twentieth century.

The Champagne Vista Dome is a two story railcar that was built in 1952. As one of the first ten full dome cars constructed by Pullman Standard, originally Number 52, it went into service on the Olympia Hiawatha the year it was made. It was dubbed "The Columbia" when sold to Canadian National in 1965 and in 1978 was sold again to Via and remained in service on the Super Continental. Tour Alaska purchased the car in 1983 and renamed it "Mt. McKinley." In 1989 the car went to California for the Sun Express and in 1990 was sold to Amtrak and numbered 9311. In 1995, it was bought by the Wine Train and named the "Champagne Vista Dome." It's exterior was refurbished at the Ringling Brothers, Barnum and Bailey Circus train yard and joined the line in 1997. Today, the Champagne Vista Dome offers exclusive luxury dining upstairs and a state of the art kitchen downstairs.



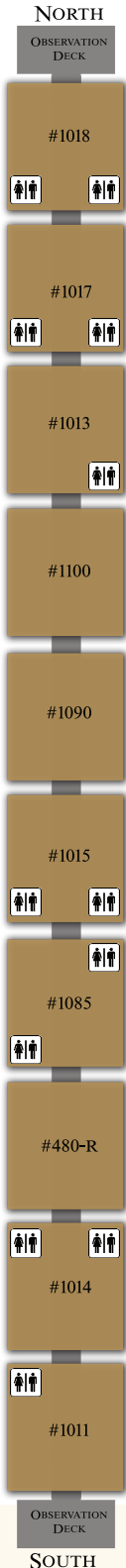
LOCOMOTIVES

The Wine Train's locomotives were built in Montreal Canada at Montreal Locomotive Works, the Canadian equivalent to the American Locomotive Company (ALCO). NVR70 was built in 1958 and 71, 72 and 73 were built in 1959. Geared to operate at more than 90 mph, they were originally equipped with steam generators for heating passenger cars. The steam was replaced by Head End Power (HEP) units that provided electricity for the passenger cars until the addition of the Grappa power car in 2013.

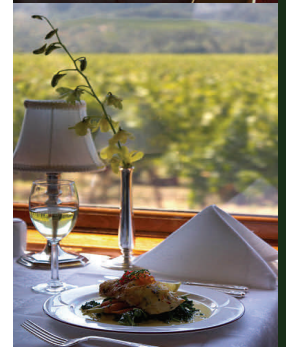
Because of its disrepair upon arrival, one locomotive could not be restored to diesel power when it was acquired. The Napa Valley Wine Train started a program for the experimental conversion of locomotive 73 to 60% natural gas and 40% diesel fuel mixture. In 1999 the conversion became permanent. A total conversion of locomotive 73 was completed and it was put into service using 100% compressed natural gas on May 14, 2003.



TRAIN LAYOUT



<u>CAR NUMBER</u>	<u>NAME</u>	<u>SEATS</u>
1018	CHARDONNAY LOUNGE CAR	50 Seats
1017	MERLOT LOUNGE CAR	50 Seats
1013	SILVERADO DINING CAR WESTERN THEMED	56 Seats
1100	LE GOURMET EXPRESS DINING CAR	60 Seats
1090	CHEF DE CUISINE KITCHEN CAR KITCHEN VIEWING	
1015	LE PETITE GOURMET DINING CAR	72 Seats
1085	CHAMPAGNE VISTA DOME DINING CAR	56 Seats
480-R	GRAPPA POWER CAR	
1014	ZINFANDEL LOUNGE CAR	41 Seats
1011	CABERNET SAUVIGNON LOUNGE CAR	50 Seats

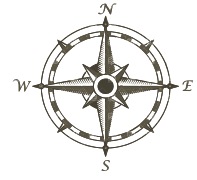
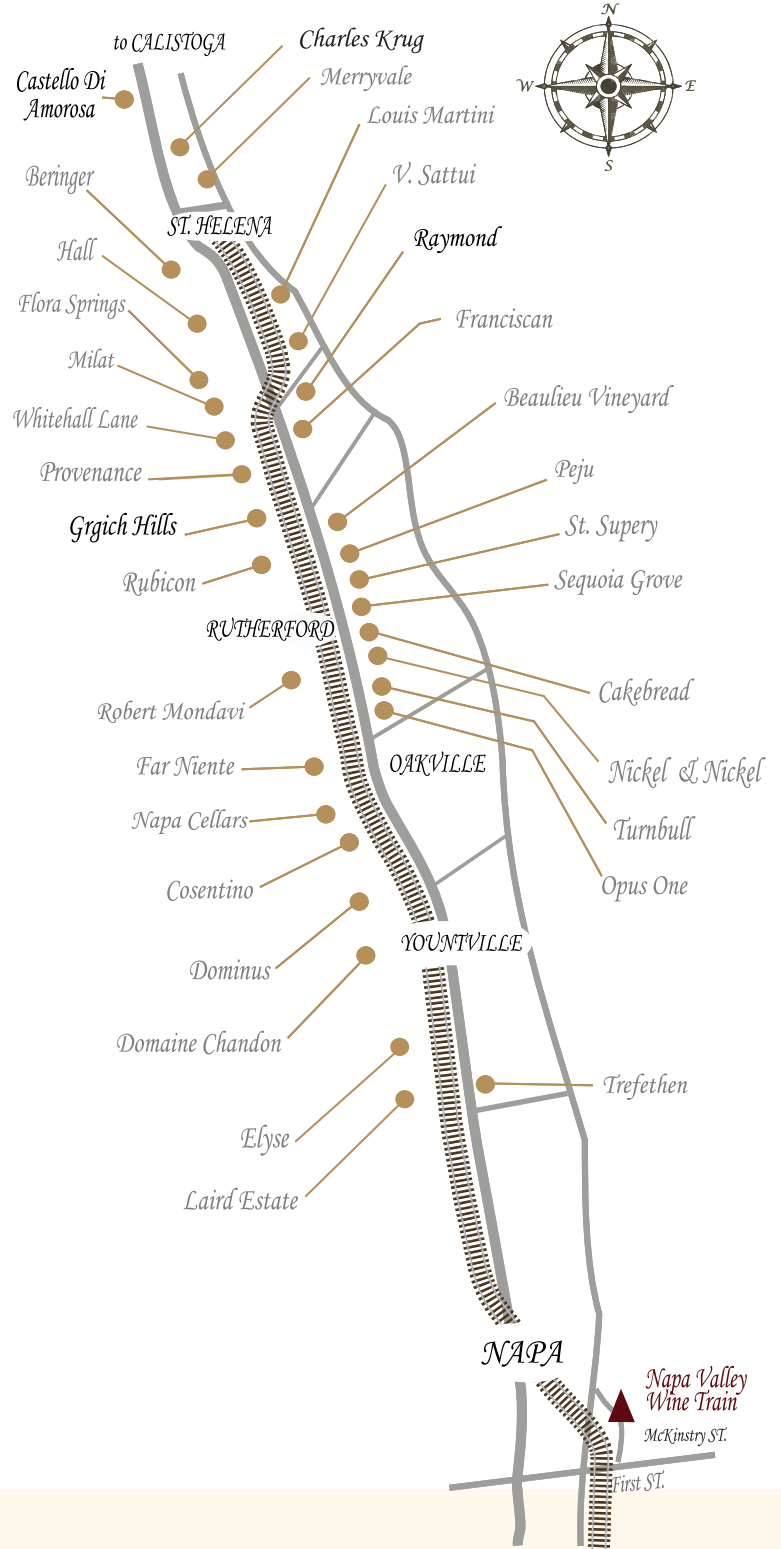




THE WINE TRAIN'S ROUTE THROUGH THE VALLEY



THE ROUTE





THE SAN FRANCISCO CONNECTION

Travel to Napa Valley without having to drive by choosing our Bay Area Connection. Visit Wine Country for a day trip or for a stress-free weekend. Our ferry connection is available in conjunction with any of our packages or Winery Tours. Use in conjunction with dinner will require an overnight stay in Napa.

\$50 Per Person

The most scenic way to travel to Napa Valley. Depart San Francisco's famous ferry building, travel across the San Francisco Bay via ferry to Vallejo where a private motor coach waits to transport you to the Wine Train Station.

Day	Depart	Return to SF
Monday-Friday	8:15 AM Ferry	4:15 PM Shuttle from Wine Train; 5:45 PM Ferry from Vallejo
Saturday-Sunday	8:15 AM Bus	4:15 PM Shuttle from Wine Train; 5:45 PM Ferry from Vallejo

Please note: On weekends a bus will transport you for the AM departure instead of the ferry



Advanced reservations required.

For more information, visit WineTrain.com/Getting-Here/



UNIQUE MEETING VENUES

Inspire your team and get your ideas on the right track. The Napa Valley Wine Train has traditional and nontraditional meeting spaces conveniently located in the heart of Downtown Napa with elevated views of the Napa River Front and the operational Wine Train Yard. We have a range of locations available for business, commercial and community organizations, as well as private events. Train charters are also available. In all of our meeting spaces, the same gourmet catering and meal service we offer on board to our guests is available.

CULINARY ARTS CENTER

The Culinary Arts Center is located at the Wine Train's Commissary, which has two meeting spaces on the floor above our Main Prep Kitchen. These spaces are ideal for formal dinners, presentations, receptions, kitchen demonstrations, award ceremonies, or intimate weddings.

Patio

Seating Capacity: 50 guests



Main Dining Room

Seating Capacity: 50 guests



MCKINSTRY STREET STATION

Enjoy the vintage decor of a functioning train station. Amenities include wine and gift shops, cafe facilities, and television screens. This large open space offers flexibility for a variety of configurations to suit your needs.

Station Lobby

Seating Capacity: 350 guests



Conference Room

Seating Capacity: 30 guests



WINE TRAIN (STATIONARY)

Experience the Wine Train without any time constraints, with flexible on and off accessibility. Enjoy the backdrop of our museum quality train whose linear layout promotes an intimate interaction within your group. The Wine Train can be staged at either the Culinary Arts Center or the McKinstry Street Station.



CONTACT US FOR RATES AND DETAILS
WINE TRAIN.COM/GROUPS • 707.253.0920